



Delegate365.com

Microsoft365 management done right

atwork

www.atwork-it.com

Delegate365 is a SaaS Solution by atwork

*"Delegate365 is an easy-to-use,
web-based portal for delegated user
and license management
in Microsoft Office 365"*

...and much more! Find it our here.

Why Delegate365?

Scenarios

Imagine, you have a single Microsoft 365 tenant...

...and you need to split it into multiple organizational units and enable delegation

...and you want to automate license assignments and workflows

...and you need auditing and scoped reporting

What is Delegate365?

Key Features

is an Add-On for Microsoft 365

splits a single Microsoft 365 tenant into self-defined organizational units

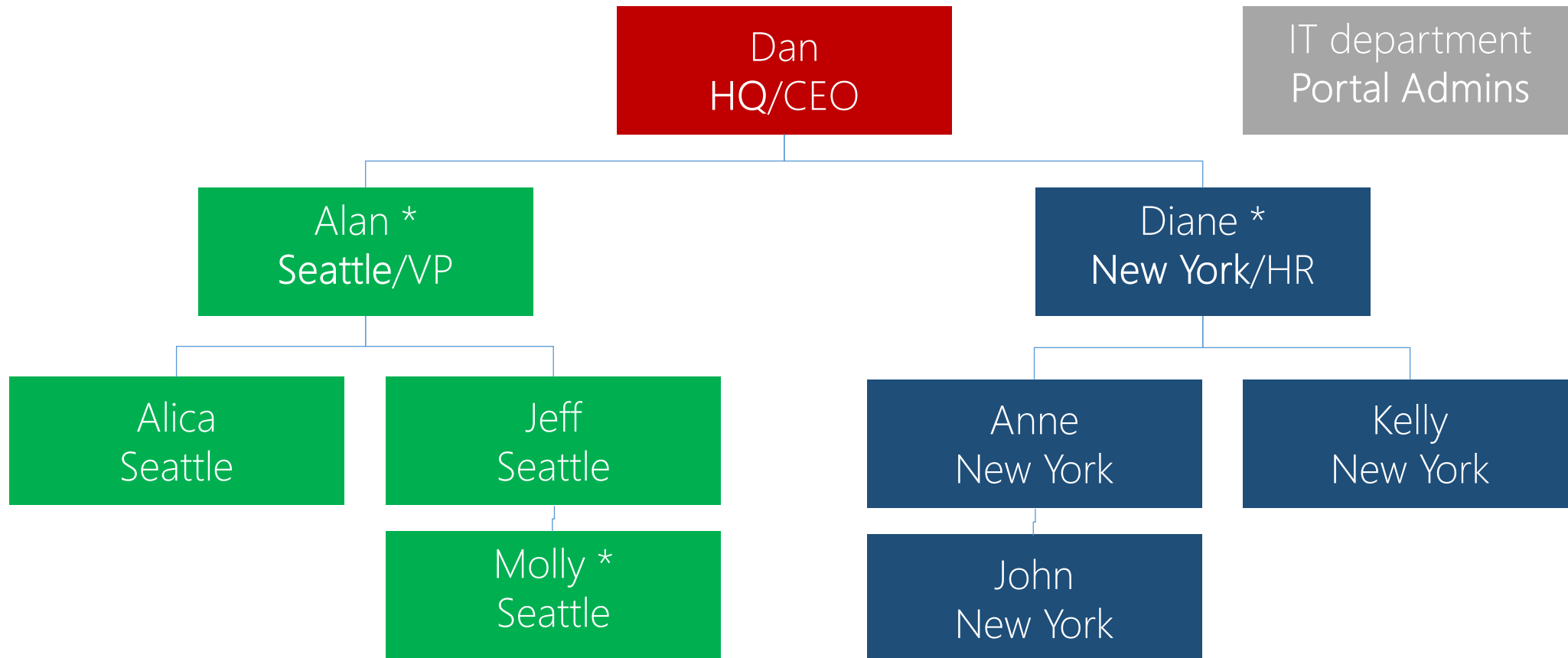
allows delegated management of users, licenses and groups

provides a licensing portal management, automation & scoped reporting

is a ready-to-use Software-as-a-Service solution

runs completely in Microsoft Azure in a datacenter of your choice in a dedicated environment (single tenant strategy)

How does delegation work in D365?



Every object is assigned to an **Organizational Unit** (OU): Seattle, New York, ...

Every **Scope Admin*** can manage only his assigned OU(s): Alan and Molly manage Seattle, Diane manages New York

Portal Admins (a leading department) manage the permissions of the Scope Admins

Why did we develop Delegate365?

Goals

Medium to large organizations have the need to split their single tenant into sub units

Common tasks shall be delegated to administrators to relieve IT

Scope Administrators shall not be able to modify any Microsoft 365 configuration (access to the Microsoft portals is prevented)

Automation of workflows such as license assignments

Auditing of all operations, so that it's clear who did what and when

What is the unique selling proposition (USP) of Delegate365?

USP of D365

Ready-to-use Software-as-a-Service (SaaS) solution

Automatic Updates by SaaS provider, maintenance-free

Runs in any Microsoft Azure Datacenter

Security of M365 and Azure, MFA, secured in the Azure Datacenter

Licensing management and built-in Automation

Auditing and Reporting directly with Microsoft Power-BI or Excel etc.

Easy to setup and easy to use, even for non-IT personal

Continuously developed by customer's feedback

Who is using Delegate365?

Customers

Organizations that use a **single Microsoft 365 tenant** and need to split it for delegated management

Mostly medium to large organizations (with thousands of users) and international companies with subsidiaries or subcontractors

Various industries: Financial Industry, Educational Facilities, Governments, NGO's, EDU, International Franchisers, etc.

Used in various countries like in Austria, Germany, Belgium, Brazil, France, Netherlands, UK, UA, USA and more

How does the Delegate365 portal look like?

The screenshot displays the Delegate365 portal dashboard. At the top, there is a blue header with the 'atwork' logo and user information for 'admin@M365x193702.onmicrosoft.com'. A left-hand navigation menu includes options like Administration, Policies, Users, Mailboxes, SharePoint, Contacts, Groups, OU's, Licenses, Reports, Logs, Import users, Service health, and Support.

The main dashboard area, titled 'Your Dashboard', features four summary cards:

- Users: 11
- Security groups: 5
- Distribution groups: 10
- Office 365 groups: 11

Below these cards are two donut charts:

- 'Users in OU' for the 'Seattle' organizational unit, showing 5 users.
- 'User licenses', showing 9 licenses.

At the bottom, there are sections for 'Service health' (with warning icons for OneDrive for Business and Exchange Online) and '@ Your domains' (listing M365x193702.onmicrosoft.com).

User management Delegate365

Delegate365
atwork
admin@M365x193702.onmicrosoft.com

- Dashboard
- Administration
- Policies
- Users**
- Mailboxes
- SharePoint
- Contacts
- Groups
- OU's
- Licenses
- Reports
- Logs

Users

Manage your users here. You can add and edit user properties, reset passwords and customize group memberships and aliases.

Select a view: All users

+ Add
Show 250 of 11 entities

	DISPLAY NAME	USER PRINCIPAL NAME	LICENSES	OU	TYPE	STATUS
<input checked="" type="checkbox"/>	Adele Vance	adelev@M365x193702.onmicrosoft.com	Enterprise Mobility + Security E5, OFFICE 365 ENTERPRISE E5, Microsoft Flow Free	Seattle	User	Cloud
<input type="checkbox"/>	Megan Bowen	MeganB@M365x193702.OnMicrosoft.com	Microsoft Flow Free, OFFICE 365 ENTERPRISE E5, Enterprise Mobility + Security	Seattle	User	Cloud
<input type="checkbox"/>	Alex Wilber	AlexW@M365x193702.onmicrosoft.com	OFFICE 365 ENTERPRISE E5, Enterprise Mobility + Security			
<input type="checkbox"/>	Bianca Pisani	BiancaP@M365x193702.OnMicrosoft.com	Office 365 Enterprise E3, Microsoft Flow Free, OFFICE 365 ENTERPRISE E5			
<input type="checkbox"/>	Nestor Wilke	NestorW@M365x193702.OnMicrosoft.com	Microsoft Flow Free, OFFICE 365 ENTERPRISE E5, Enterprise Mobility + Security E5	New York	User	Cloud
<input type="checkbox"/>	Christie Cline	ChristieC@M365x193702.OnMicrosoft.com	OFFICE 365 ENTERPRISE E5, Enterprise Mobility + Security	New York	User	Cloud

Adele Vance

adelev@M365x193702.onmicrosoft.com

- Edit
- Switch OU
- Reset Password
- Password Policy
- Licenses
- Email address
- Report OneDrive files
- Mailbox
- MFA
- Member of
- Convert to shared mailbox
- Convert to resource mailbox
- Devices
- Revoke sign in sessions
- Delete

Features are controlled by permission policies

© 2020 by atwork - version 9.2 Imprint · Help

(Manual) License management in Delegate365

The screenshot displays the Delegate365 user management interface. On the left is a navigation sidebar with options like Dashboard, Administration, Policies, Users, Mailboxes, SharePoint, Contacts, Groups, OU's, Licenses, and Reports. The main area shows a list of users with columns for selection, display name, user principal name, and licenses. Megan Bowen is selected, and a modal window titled 'Assign License' is open for her. This modal shows a dropdown for 'Set user location' set to 'UNITED STATES' and several license options with progress bars and counts: Enterprise Mobility + Security E5 (4/10), OFFICE 365 ENTERPRISE E5 (4/10), Office 365 Enterprise E3 (1/2), Microsoft Flow Free (5/10000), EXCHANGE_S_FOUNDATION, Common Data Service, and Flow Free. A 'Save' button is visible at the bottom of the modal. A yellow callout box points to the license progress bars with the text: 'License quotas and license restrictions prevent incorrect manual assignments'.

Users
Manage your users here. You can add and edit user properties, reset passwords and customize group

Select a view
All users

<input type="checkbox"/>	DISPLAY NAME	USER PRINCIPAL NAME	LICENSES
<input type="checkbox"/>	Adele Vance	adelev@M365x193702.onmicrosoft.com	Enterprise M E5, OFFICE 3 E5, Microsoft
<input checked="" type="checkbox"/>	Megan Bowen	MeganB@M365x193702.OnMicrosoft.com	Microsoft Flo ENTERPRIS Mobility + Se
<input type="checkbox"/>	Alex Wilber	AlexW@M365x193702.onmicrosoft.com	OFFICE 365 E5, Enterpris E5, Microsoft
<input type="checkbox"/>	Bianca Pisani	BiancaP@M365x193702.OnMicrosoft.com	Office 365 E Flow Free, O ENTERPRIS
<input type="checkbox"/>	Nestor Wilke	NestorW@M365x193702.OnMicrosoft.com	Microsoft Flo ENTERPRIS Mobility + Se

Assign License
Set user location
UNITED STATES

- Enterprise Mobility + Security E5 4 / 10
- OFFICE 365 ENTERPRISE E5 4 / 10
- Office 365 Enterprise E3 1 / 2
- Microsoft Flow Free 5 / 10000
- EXCHANGE_S_FOUNDATION
- Common Data Service
- Flow Free
- Windows 10 Enterprise E3

Save Cancel

License quotas and license restrictions prevent incorrect manual assignments

© 2020 by atwork - version 9.2

Rich and scoped Reporting in Delegate365

Delegate365 reports (version 8.5)

Azure Active Directory

- 1 Sign-in activity

Risk Events

- 2 Anonymous IP
- 3 Impossible travel
- 4 Leaked credentials
- 5 Malware
- 6 Suspicious IPs
- 7 Unfamiliar locations

Identity Registration and Usage

- 8 Registration details
- 9 Usage details
- 10 Registration count *
- 11 Credential usage summary *

Office 365

- 12 Active user detail
- 13 Active user counts *
- 14 Services user counts *
- 15 Groups activity detail
- 16 Groups activity counts *
- 17 Groups activity group counts *
- 18 Groups activity storage *
- 19 Groups activity file counts *
- 20 Activations user detail
- 21 Activation counts *
- 22 Activations user counts *

Microsoft Teams

- 23 Device usage user detail
- 24 Device usage user counts *
- 25 Device usage distribution user counts *
- 26 User activity user detail
- 27 User activity counts *
- 28 User activity user counts *

Skype for Business

- 29 Activity user detail
- 30 Activity counts *
- 31 Activity user counts *
- 32 Device usage user detail
- 33 Device usage distribution user counts *
- 34 Device usage user counts *
- 35 Organizer activity counts *
- 36 Organizer activity user counts *
- 37 Organizer activity minute counts *
- 38 Participant activity counts *
- 39 Participant activity user counts *
- 40 Participant activity minute counts *
- 41 Peer to peer activity counts *
- 42 Peer to peer activity user counts *
- 43 Peer to peer activity minute counts *

Yammer

- 44 Activity user detail
- 45 Activity counts *
- 46 Activity user counts *
- 47 Device usage user detail
- 48 Device usage distribution user counts *
- 49 Device usage user counts *
- 50 Groups activity detail *
- 51 Groups activity group counts *
- 52 Groups activity counts *

SharePoint

- 53 Activity user detail
- 54 Activity file counts *
- 55 Activity user counts *
- 56 Activity pages *
- 57 Site usages detail *
- 58 Site usage file counts *
- 59 Site usage site files counts *
- 60 Site usage storage *
- 61 Site usage pages *

Users

- 96 Shared OneDrive files

OneDrive

- 62 Activity user detail
- 63 Activity user counts *
- 64 Activity file counts *
- 65 Usage account detail *
- 66 Usage account counts *
- 67 Usage file counts *
- 68 Usage storage *

Exchange

- 69 Activity user detail
- 70 Activity counts *
- 71 Activity user counts *
- 72 App usage user detail
- 73 App usage user counts *
- 74 App usage user counts *
- 75 App usage versions user counts *
- 76 Usage detail
- 77 Usage mailbox counts *
- 78 Usage quota status mailbox counts *
- 79 Usage storage *
- 80 User forwarding
- 81 Litigation hold user mailboxes
- 82 Litigation hold shared mailboxes
- 83 Litigation hold resource mailboxes

Delegate365

- 84 Report Services
- 85 Groups governance
- 86 User
- 87 Security groups
- 88 Office 365 groups
- 89 Distribution groups
- 90 Dynamic groups
- 91 Shared mailboxes
- 92 Resources
- 93 Contacts
- 94 License statistics
- 95 OU overview

Scope Admins just see reports with their entitled data

Licenses overview in Delegate365

Delegate365
atwork

 🔔 | 📧 1 | 👤 admin@M365x193702.onmicrosoft.com

- 🏠 Dashboard
- 🔒 Administration ▾
- 🔒 Policies ▾
- 👤 Users
- 📧 Mailboxes ▾
- 📁 SharePoint
- 👤 Contacts
- 👥 Groups ▾
- 👤 OU's ▾
- 📄 Licenses ▾
- Bulk assign licenses
- License report

🏠 London ▾

🏠 New York ▾

🏠 Seattle ▴

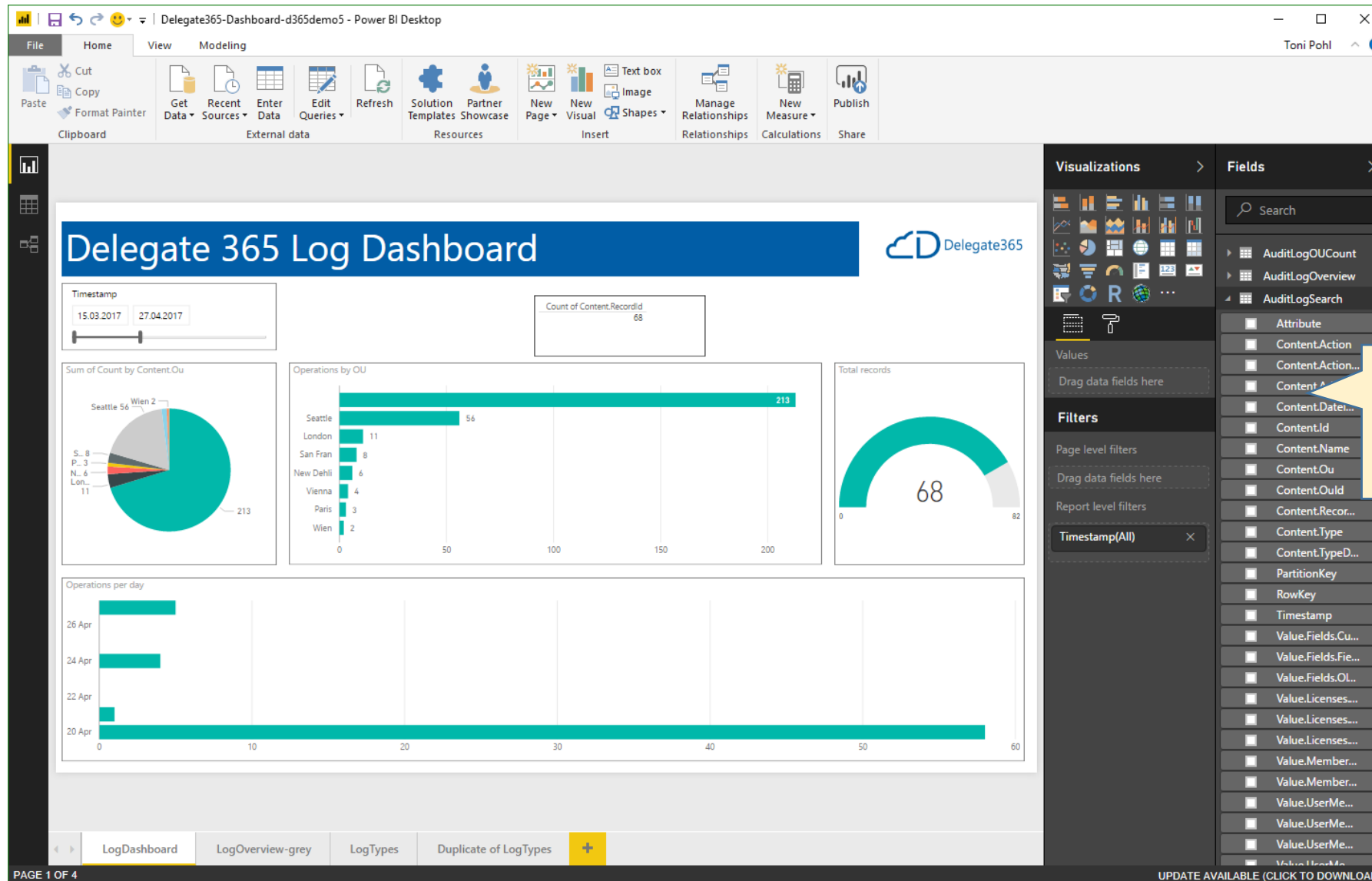
Type	Used
User	5
Distribution Groups	5
Resources	3
Shared Mailboxes	0
Security Groups	3
Contacts	1
Dynamic Groups	0
Microsoft 365 Groups	5

License Display Name	License Limit	Used
Enterprise Mobility + Security E5	10	4
OFFICE 365 ENTERPRISE E5	10	4
Office 365 Enterprise E3	-	1
Microsoft Flow Free	-	5
Windows 10 Enterprise E3	5	1

Statistics with quota
and usage for cost
center billing

© 2020 by atwork · version 9.2
Imprint · Help ▾

Direct access to audit logs of Delegate365



Use Power BI or other tools for further reporting

Benefits of Delegate365

Added Value

Easy usage, ready to use in minutes

Portal for common tasks

Auditing & Reporting

Automation: Automatic assignment of users and groups

Automation: Delegate365 API and PowerShell module allow customizations if needed

Where is Delegate365 hosted?

Hosting

Delegate365 is provided as Software-as-a-Service (no installation needed)

Runs completely in Microsoft Azure

Runs in a Microsoft datacenter of the customers choice

Updates are announced in the changelog and are automatically installed

How is security in Delegate365?

Security 1

Login with built-in-security and Office 365 credentials (MFA support)

Single Sign On authentication experience

Scope Administrators usually do not have any role in Office 365 (and cannot break any tenant settings)

Check out the White Paper for the concept of Delegate365 at <http://bit.ly/d365whitepaper>

All operations are made against the API's provided by Microsoft via secure HTTPS requests.

How is security in Delegate365?

Security 2

Delegate365 stores just minimal data for caching such as Object IDs, UPN and OU assignments

Configuration data is always encrypted in Delegate365

Operational data never leaves the Microsoft datacenter
(except Audit Logs are downloaded by the admins from the storage, access only for Portal Admins)

Separation of data: Each customer gets his own instance of Delegate365 with his own portal website and his own database. There's no multitenant environment, each site is dedicated.

Delegate365 fully supports the GDPR compliance and right to be forgotten.

For more information about security and compliance standards used pls. refer to the Microsoft Azure Trust Center: Compliance at <http://azure.microsoft.com/en-us/support/trust-center/compliance/>.

Support and SLA of Delegate365?

Service+Support

atwork supports for the initial configuration

atwork offers optional support for Delegate365, as for example, 3 hours per month with a reduced price.

A support ticket can be opened directly in Delegate365 or by sending an email

General updates are automatically provided and are cost free for all customers

Individual updates can be requested if needed

By default Delegate365 is based on the Microsoft SLA for one Web App. See more about Azure Service Level Agreements at <http://azure.microsoft.com/en-us/support/legal/sla/>

Backup of Delegate365?

Backup

As Delegate365 is running on Azure as SaaS solution there's usually no need to take care of backup and restore scenarios on the customer side

The services itself are designed to be up and running 24/7

atwork does run backup jobs of the Delegate365 database on a daily basis in Azure

Users, Groups and Licenses are not stored in Delegate365 but in Office 365.

A potential data loss of Delegate365 in the worst case means only a reconfiguration of Delegate365. Users can continue to work with Office 365 services as before

Licensing of Delegate365?

Licenses

The licensing is at user base for the number of users that are to be managed with Delegate365. See <http://delegate365.com/prices>

The number of licenses in Delegate365 mostly is identical with the Office 365 licenses

The number of Delegate365 user licenses can be increased anytime

Additional licenses will be added starting with the agreed date for the rest of the run time (until the end of the first year)

Conditions for ordering Delegate365

Order conditions

To receive a quote or to order Delegate365, pls. contact us at office@atwork.at

Payment is yearly

Service will automatically renew after one year and can be terminated on a quarterly basis after the end of the first year

Payment can be made by bank transfer or through PayPal

After payment, the provisioning of Delegate365 is done instantly (usually within one work day)

Order workflow of Delegate365

Starting...

After payment, the customer receives a link to an online form to define the details of his Delegate365 instance (desired data center, name of the URL, technical contact, etc.)

Once the definition is made, the provisioning of Delegate365 is done instantly (usually within one work day)

The customer gets an email with the access data can start use Delegate365

atwork can support for the initial setup if needed

Usually, most customers start with a clean, new instance of Delegate365 (and not with a takeover of the trial data)

More information about Delegate365

Resources

OnePager <http://bit.ly/d365onepage>

Website <http://bit.ly/d365web>

FAQs <http://bit.ly/d365faq>

Videos <http://bit.ly/d365videos>

Changelog <http://bit.ly/d365changelog>

Pricing <http://bit.ly/d365prices>

Blog Changelog <http://bit.ly/d365blognews>

Blog RSS-feed <http://bit.ly/d365blog>

Test it in AppSource <http://bit.ly/d365demo>

Open a Trial <http://bit.ly/d365trial>

White Paper <http://bit.ly/d365whitepaper>

Overview <http://bit.ly/d365overview>

Contact <http://bit.ly/d365contact>



Delegate365.com

Microsoft365 management done right

atwork

www.atwork-it.com

Check it out at
<http://delegate365.com>

In case of questions,
please contact us at
office@atwork.at

Delegate365 is a SaaS Solution by atwork